

Reference list

*of hydraulic steel construction plants equipped
by Hagenbuch Hydraulic Systems AG*



Hagenbuch Hydraulic Systems AG has many years of experience within the range of the hydraulic steel constructions and shutoff devices.

The following reference list shows an excerpt of realized plants. It mainly concerns hydraulic systems for small and middle weir systems for **hydraulic drives for rake cleaning machines and hydraulic power units for small turbines.**

Plant or customer name	Type of plant	Delivery includes
Andritz Hydro Kriens	Grimsel II	820m pipes inox
Burentobel St. Gallen	Opening flap	1 Cylinder 180/90x1120 1 Hydraulic power unit
Burvagn (EWZ Zürich)	3 Opening flaps 3 Base sluices 2 Flat sluices	3 Cylinders 160/125x1500 3 Cylinders 200/110x2850 1 Cylinder 100/70x2770 3 Cylinders 100/70x1550 1 Hydraulic power unit
Centrale de Vessy	Opening flap	1 Cylinder 250/140x1800 1 Hydraulic power unit
CVE Bex	Flushing sluice	1 Cylinder 100/70x2050 1 Hydraulic power unit
Elggis - Kraft AG	3 Contactor sluices with synchronous-speed control	2 Cylinder DM 125/80x3640 2 Cylinder DM 140/90x5000 2 Cylinder DM 200/110x2900 1 Hydraulic power unit
Electro Massa	Opening flap	1 Cylinder 180/90/1721 1 Hydraulic power unit
EWZ water collection Fallerbach	2 Contactor sluices	1 Cylinder DM 125/70x2100 1 Cylinder DM 80/45x550
EWZ Marmorera	Opening flap	1 Cylinder 125/70x2400 1 Hydraulic power unit
Water collection Durnagelbach	Flat sluice	1 Cylinder 80/60x1360 1 Cylinder 63/45x1140 1 Hydraulic power unit
Felsen weir	Flat sluice	3 Cylinders 180/125x4800
Filisur ALK Bergün	Opening flap	1 Cylinder 100/60x1050 1 Position locators
Grande Dixence	Flat sluice	1 Cylinder 100/60x950 1 Cylinder 80/45x850 1 Cylinder 100/60x1050 2 Hydraulic power units
Grande Pente	Flat sluice	1 Cylinder 80/45x850 1 Hydraulic power unit
Main drain gate Campocologna 2	Flat sluice	1 Cylinder 160/90x2600 1 Hydraulic power unit
Flood protection Muota	Flat sluice	1 Cylinder 100/55x2050 1 Hydraulic power unit



Plant or customer name	Type of plant	Delivery includes
Hydroexploitation Sion	Centrale Vetaux Glurlingen Les Tappistes Martigny	2009 750m pipes inox DM 6-42 2010 340m pipes inox DM 6-42 2011 400m pipes inox DM 6-42 2012 600m pipes inox DM 6-42 280m pipes inox DM 20 100m pipes DM 16
Power plant in the Tessin	Flat sluice	1 Cylinder 160/90x2030 1 Hydraulic power unit
Power plant Turgi	Flat sluice	2 Cylinders 160/110x4800 2 Hydraulic power units
KW Albruck	Hydraulic for underwater shooter	1 Hydraulic power unit incl. control
KW Alpnach Sarner Aa	Turbine control	1 Hydraulic power unit
KW Amsteg water collection Reuss	Opening flaps Segment sluice	1 Cylinder 140/80x1550 2 Cylinders 100/70x1900 1 Hydraulic power unit
KW Amsteg water collection Reuss	1 Regulation sluice 1 Segment sluice	1 Cylinder 140/80x1550 1 Cylinder 100/70x2000 1 Hydraulic power unit
KW Amsteg regulation power plant	3 Flat sluices 1 Water collection flap	1 Cylinder 125/90x2800 3 Cylinders 125/70x1450 1 Hydraulic power unit
KW Amsteg	Roll sluice	2 Cylinders 200/140x6950 1 Hydraulic power unit
KW Amsteg surge chamber	Flat sluice Segment sluice	1 Cylinder 125/70x1450 2 Cylinders 125/90x2800 1 Hydraulic power unit
KW Linth	flat sluice	3 Cylinders 100/60x1800 1 Cylinder 125/70x1500 1 Hydraulic power unit
KW Aue Baden	Hydraulic unit replacement	1 Hydraulic power unit
KW Branche	1 Contactor sluice	1 Cylinder DM 100/60x2050 1 Hydraulic power unit
KW Bruck	Hydraulic unit replacement	1 Hydraulic power unit
KW Bruggmühle/Bremgarten	Opening flap	1 Cylinder 200/100x3400 1 Cylinder 100/60x200 1 Hydraulic power unit
KW Ettlisbühl Malters	Flood protection kl. Emme	Various cylinders for opening flaps and segment drain gates. 1 Hydraulic power unit



Plant or customer name	Type of plant	Delivery includes
KW Gettnau	Opening flap	1 Cylinder 200/110x2905 1 Hydraulic power unit
KW Giessen Nesslau	Flat sluice	1 Cylinder 80/55x1250 1 Cylinder 100/70x2550 1 Cylinder 125/90x2200 1 Hydraulic power unit
KW Göschenen	Hydraulic Water collection	1 Hydraulic power unit incl. control 40m pipes inox
KW Hätzingen	Opening flap	1 Cylinder 140/70x1420 1 Hydraulic power unit
KW Haslen	Bottom outlet Opening flap Shooter	1 Cylinder 100/60x3050 1 Cylinder 140/80x1650 1 Cylinder 140/90x3700 1 Cylinder 125/80x3630 1 Hydraulic power unit
KW Hinterrhein AG	2 Opening flaps 2 Segment sluices (Scouring) 1 Intake sluice	2 Cylinders DM 280x2710 2 Cylinders DM 230/120x2850 1 Cylinder DM 180/90x4290
KW Interlaken	Opening flap	3 Cylinders 200/100x3000 1 Hydraulic power unit
KW Isenthal	Hydraulic replacements	1 Hydraulic power unit
KW Jenni	Opening flap Flat sluice	2 Cylinders 125/70x1220 2 Cylinders 100/70x2050 2 Cylinders 80/45x1250 1 Hydraulic power unit
KW Laufen	Flat sluice	1 Cylinder 125/55x1550 1 Hydraulic power unit
KW Mattmark FW water collection Ried- bach	Flat sluice	1 Cylinder 140/80x1991
KW Thorberg Littau	Opening flap	1 Cylinder 80/60x1750 1 Hydraulic power unit
KW Mörel	Opening flap	1 Cylinder 125/70x2050 1 Hydraulic power unit
KW Mühlau	Opening flap + Rake cleaning machine	2 Cylinders 220/110x3868 1 Hydraulic power unit
KW Mühleführ	2 Opening flaps	2 Cylinders 200/100x3000 1 Hydraulic power unit
KW Oberhasli AG	Grimsel II Gerstegg	Upgrade manifold 180m pipes NW 40 inox
KW Orbe	2 Opening flaps 2 Intake sluices	2 Cylinders DM



Plant or customer name	Type of plant	Delivery includes
KW Schwanden	Flat sluice Opening flap	1 Cylinder 65/45x750 1 Cylinder 140/90x4200 1 Cylinder 100/70x2000 1 Cylinder 200/100x3000 1 Hydraulic power unit
KW Tiefencastel	Opening flap	1 Cylinder 160/100x2050 1 Hydraulic power unit
KW Tobel	Flat sluice	2 Cylinders 125/60x1550 1 Hydraulic power unit
KW Wettingen	3 Opening flaps 3 Segment sluices 3 Flat sluices	3 Cylinders 250/140x1340 3 Cylinders 200/110x2470 3 Cylinders 160/90/1950 3 Hydraulic power units 3 Drive controls
KW Wysswasser AG	Pusher	1 Hydraulic power unit
KW Zellweger Uster	Opening flap	1 Cylinder DM 140/80x2000 1 Hydraulic power unit
KWO Innertkirchen	1 Opening flaps 2 Segment sluices	2 Cylinders DM 200/100x1975 2 Cylinders DM 230/125x6200 2 Cylinders DM 140/80x1900
Linth Limmern Nestil	Roll sluice	1 Cylinder 180/100x2600 1 Hydraulic power unit
Lizerne et Morge SA	Diverse water catchments	3 Hydraulic power units
Mülibach Engi	Flat sluice	1 Cylinder 140/80x1745 1 Cylinder 125/70x1620
Muttsee	Scouring	2 Cylinders 1 Hydraulic power unit
Nenzlingen	Opening flap	1 Cylinder 140/80x1800 1 Hydraulic power unit 2/2-Poppet valve
Rätia Energie Prävegin Küblis-Klosters	Opening flap	Hydraulic power unit Cylinder revision
Regulation of Lake "Pfäffikersee"	Flat sluice	2 Cylinders 80/45x950 1 Hydraulic power unit
Reuss weir Luzern	Flood protection kl. Emme	Various Cylinders for opening flaps and segment drain gates. 1 Hydraulic power unit
RRM Gadenstätt	Opening flap	1 Cylinder 100/60x100 1 Cylinder 80/56x3020 1 Pump unit
RRM Gribbiasca	Water collection	1 Cylinder 100/60x100 1 Cylinder 80/56x2800

Plant or customer name	Type of plant	Delivery includes
Stahlwasserbau Leuggern		1 Cylinder 125/70x1280
Retaining dam Castiletto	Flat sluice	2 Cylinders 200/120x3150 1 Hydraulic power unit
Grafity dam Egschi	2 Contactor sluices 2 Segment sluices	
Retaining dam Egschi	2 Opening flaps 1 Segment sluice	2 Cylinders 320/220x2006 1 Cylinder 140/70x2100 1 Hydraulic power unit Hydraulic pipes
Weir dam Klosters	Roll sluice	1 Cylinder 140/70x2050 1 Hydraulic power unit 1 Control
Val Russein Bacuns	Cylindre for sluice gate	2 Cylinders DM 100/60x1100 1 Cylindre DM 140/80x1100 1 Hydraulic power unit
Weir Plancanin	Flushing gate Pusher Bottom outlet	1 Cylinder 100/70x1100 1 Cylinder 100/50x800 1 Hydraulic power unit
Weir les Trappistes	Various opening flaps/ sluice	1 Hydraulic power unit

Pictures of some plants

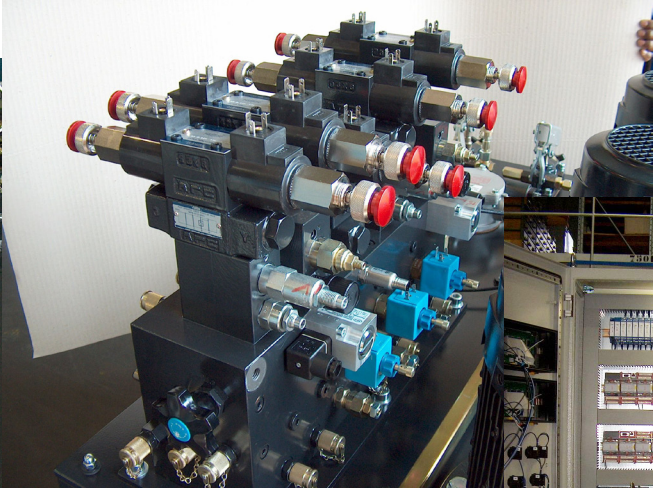
KW Altbruck





Pictures of some plants

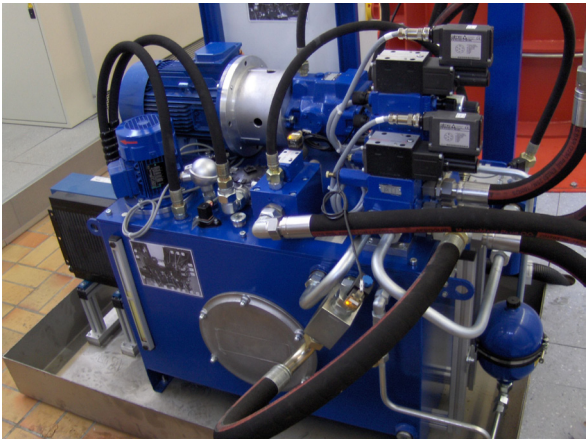
KW Wettingen



KW Göschenen



KW Alpnach



KW Haslen





Pictures of some plants

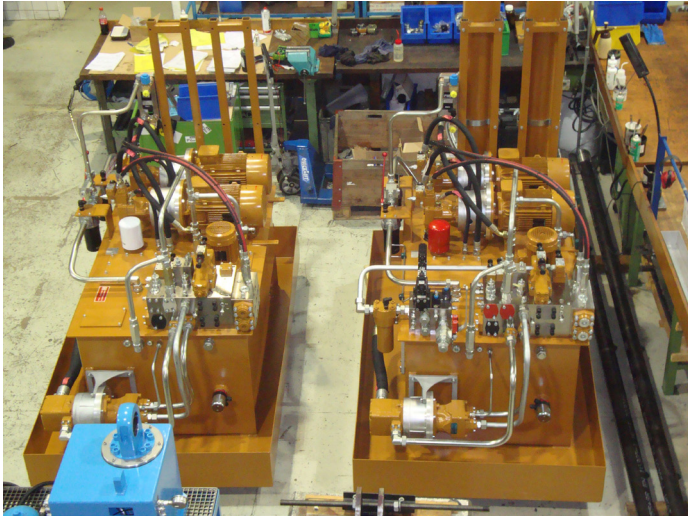
Lizerne et Morge SA



KW Plancanin



KW Plancanin



Hagenbuch Hydraulic Systems AG, Rischring 1, CH-6030 Ebikon, Tel. +41 (0)41 444 12 00, Fax +41 (0)41 444 12 01

info@hagenbuch.ch
www.hagenbuch.ch



201803/1004/E